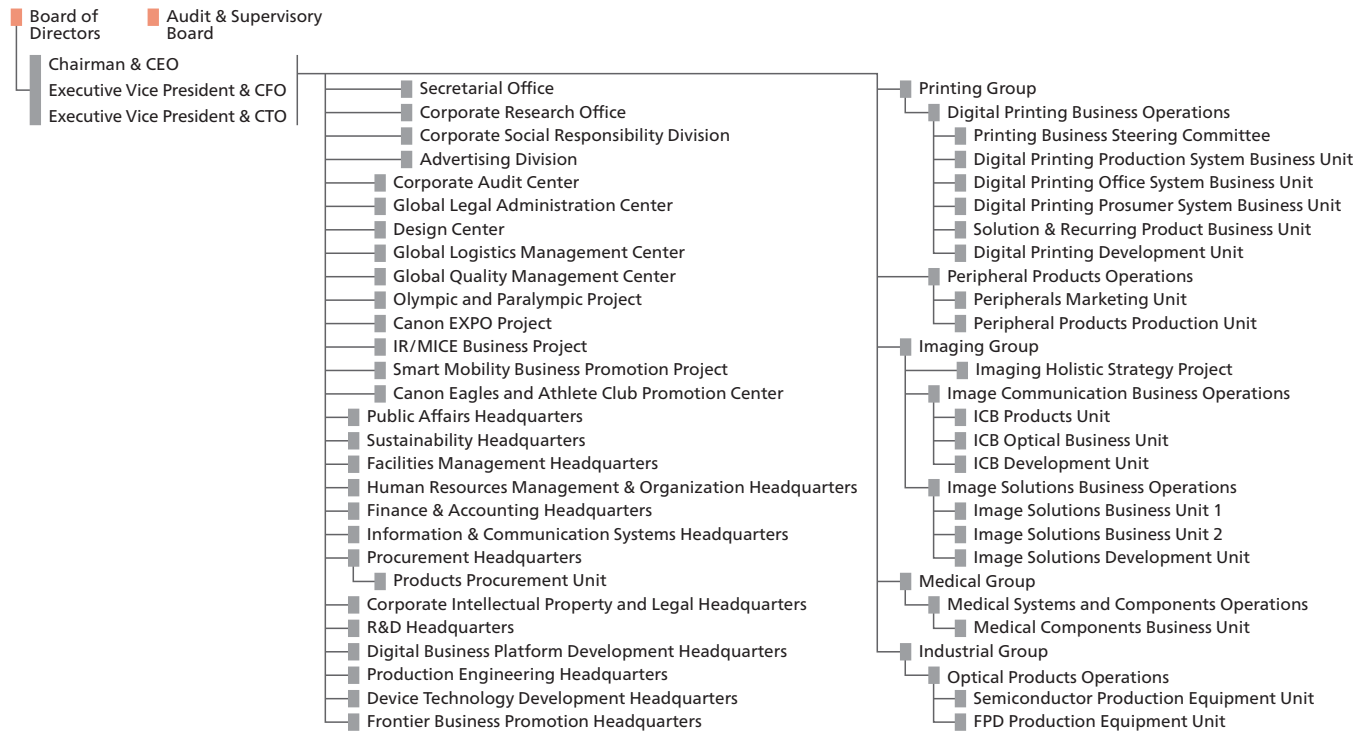


**CANON
FACT
BOOK**

2021/2022

Organizzazione aziendale



Board of Directors (al 1° maggio 2021) *Esterno

Directors



Fujio Mitarai Chairman & CEO
Toshizo Tanaka Executive Vice President & CFO, Group Executive, Finance & Accounting Headquarters, Group Executive, Public Affairs Headquarters, Group Executive, Facilities Management Headquarters
Toshio Homma Executive Vice President & CTO, Head of Printing Group
Kunitaro Saida Director*
Yusuke Kawamura Director*

Audit & Supervisory Board Members



Ryuichi Ebinuma Audit & Supervisory Board Members
Hiroaki Sato Audit & Supervisory Board Members
Yutaka Tanaka Audit & Supervisory Board Members*
Hiroshi Yoshida Audit & Supervisory Board Members*
Koichi Kashimoto Audit & Supervisory Board Members*

Executive Officer

Executive Vice Presidents	Senior Managing Executive Officers	Managing Executive Officers				
Hideki Ozawa President & CEO, Canon (China) Co., Ltd.	Seymour Liebman Executive Vice President, Canon U.S.A., Inc.	Toshio Takiguchi Head of Medical Group, President & CEO, Canon Medical Systems Corporation	Kenichi Nagasawa Group Executive, Corporate Intellectual Property and Legal Headquarters	Eiji Osanai Group Executive, Production Engineering Headquarters	Yuichi Ishizuka President & CEO, Canon Europa N.V., President & CEO, Canon Europe Ltd.	Kazuto Ogawa President & CEO, Canon U.S.A., Inc.
Takayuki Miyamoto Group Executive, Frontier Business Promotion Headquarters, Chief, Canon EXPO Project	Hiroaki Takeishi Head of Industrial Group, Chairman & CEO, Canon Tokki Corporation	Masanori Yamada Head of Imaging Group, Chief, Olympic and Paralympic Project, IR/MICE Business Project	Aitake Wakiya Executive Vice President & CFO, Canon Europe Ltd.	Shunsuke Inoue Group Executive, R&D Headquarters	Katsumi Iijima Group Executive, Digital Business Platform Development Headquarters	Soichi Hiramatsu Group Executive, Procurement Headquarters
Takashi Takeya Senior General Manager, Global Logistics Management Center	Go Tokura Group Head of Imaging Group	Hisahiro Minokawa Group Executive, Human Resources Management & Organization Headquarters	Ritsuo Mashiko President, Oita Canon Inc., Chairman & CEO, Miyazaki Canon Inc., Chairman & CEO, Nagasaki Canon Inc.	Minoru Asada President & CEO, Canon Production Printing Holding B.V.	Kazuhiko Nagashima Group Executive, Finance & Accounting Headquarters	Yoichi Iwabuchi Group Executive, Information & Communication Systems Headquarters
Toshihiko Kusumoto Deputy Chief Executive, Digital Printing Business Operations	Nobuyuki Tainaka Senior General Manager, Global Legal Administration Center	Takanobu Nakamasu Executive Vice President, Canon Europe Ltd.	Akiko Tanaka Deputy Group Executive, R&D Headquarters	Noriko Gunji Group Executive, Sustainability Headquarters	Hideki Sanatake Deputy Group Executive, Corporate Intellectual Property and Legal Headquarters	Tamaki Hashimoto Unit Executive, Solution & Recurring Product Business Unit
Hideto Kohtani Unit Executive, Image Solutions Business Unit 1	Katsuhiko Shinjo Deputy Group Executive, R&D Headquarters	Katsuyoshi Soma President, Fukushima Canon Inc.	Masaki Omori President, Canon Machinery Inc.	Saijiro Endo Senior General Manager, Digital Printing Development Technology Planning & Management Center	Toshiyuki Matsuda Unit Executive, Peripherals Marketing Unit	Takeshi Ichikawa Group Executive, Device Technology Development Headquarters
Hiroto Okawara Unit Executive, Image Solutions Business Unit 2 Chief, Smart Mobility Business Promotion Project	Yoshiyuki Koshimizu Senior General Manager, Digital Printing Business Planning & Management Center	Toshiyuki Ishii Executive Vice President, Canon (China) Co., Ltd.	Masahide Kinoshita Chief Executive, Peripheral Products Operations	Shunji Sawa Plant Manager, Toride Plant		

Canon Inc.

Data di fondazione	Numero di dipendenti	URL
Agosto 1937	25.713	https://global.canon
Sedi	Indirizzo	
Sede centrale	30-2, Shimomaruko 3-chome, Ohta-ku, Tokyo 146-8501, Giappone	
Ufficio di Yako	3-451, Tsukagoshi, Saiwai-ku, Kawasaki, Kanagawa 212-8530, Giappone	
Ufficio di Kawasaki	70-1, Yanagicho, Saiwai-ku, Kawasaki, Kanagawa 212-8602, Giappone	
Ufficio di Tamagawa	16-1, Shimonoge 3-chome, Takatsu-ku, Kawasaki, Kanagawa 213-8512, Giappone	
Ufficio di Kosugi	9-1, Imaikami-cho, Nakahara-ku, Kawasaki, Kanagawa 211-8501, Giappone	
Stabilimento di Hiratsuka	22-5, Tamura 9-chome, Hiratsuka, Kanagawa 254-0013, Giappone	
Stabilimento di Ayase	2596, Yoshioka, Ayase, Kanagawa 252-1124, Giappone	
Centro di ricerca di Fuji-Susono	4202, Fukara, Susono, Shizuoka 410-1196, Giappone	

Consociate e affiliate di produzione

Nome azienda	Località	Fond.	Dip.
GIAPPONE			
Canon Electronics Inc.	Saitama	1954	1.913
Canon Precision Inc.	Aomori	1952	1.867
Canon Chemicals Inc.	Ibaraki	1950	1.566
Oita Canon Inc.	Oita	1982	3.240
Canon Finetech Nisca Inc.	Saitama	1953	1.630
Canon Components, Inc.	Saitama	1984	1.054
Nagahama Canon Inc.	Shiga	1988	1.033
Canon Optron, Inc.	Ibaraki	1974	143
Oita Canon Materials Inc.	Oita	1998	1.551
Ueno Canon Materials Inc.	Mie	2002	433
Fukushima Canon Inc.	Fukushima	2003	1.700
Canon Semiconductor Equipment Inc.	Ibaraki	1917	537
Canon Ecology Industry Inc.	Ibaraki	2004	526
Canon Mold Co., Ltd.	Ibaraki	1972	516
Canon Tokki Corporation	Niigata	1967	732
Nagasaki Canon Inc.	Nagasaki	2008	936
Canon ANELVA Corporation	Kanagawa	1967	1.102
Miyazaki Canon Inc.	Miyazaki	1980	1.121
Fukui Canon Materials Inc.	Fukui	2017	135
Canon Electron Tubes & Devices Co., Ltd.	Tochigi	2003	490
Canon Machinery Inc.	Shiga	1972	815
Canon Medical Systems Corporation	Tochigi	1948	5.434
Canon Wind Inc.	Oita	2008	29
Top Business Machines Co., Ltd.	Shiga	1966	49
OHARA Inc.*	Kanagawa	1941	439
AMERICHE			
Canon Virginia, Inc.	USA/Virginia	1985	1.009
Canon Environmental Technologies, Inc.	USA/Virginia	1996	113

Consociate e affiliate per Ricerca, sviluppo e software

Nome azienda	Località	Fond.	Dip.
GIAPPONE			
Canon Imaging Systems Inc.	Niigata	1990	492
Canon IT Solutions Inc.	Tokyo	1982	3.646
Canon Esquise System Inc.	Tokyo	1994	19
Canon Electronics Technology Inc.	Tokyo	1970	425
AMERICHE			
Canon Nanotechnologies, Inc.	USA/Texas	2001	96
Arcules Inc.	USA/California	2017	61
EUROPA			
Canon Research Centre France S.A.S.	Francia/Ille-et-Vilaine	1990	48
Canon Ophthalmic Technologies Sp. z o. o.	Polonia/Wroclaw	1992	31
NT-ware Systemprogrammierungs-GmbH	Germania/Bad Iburg	1998	117

Sedi	Indirizzo	
Ufficio di Utsunomiya	19-1, Kiyoharakogyodanchi, Utsunomiya, Tochigi 321-3293, Giappone	
Stabilimento di prodotti ottici Utsunomiya	20-2, Kiyoharakogyodanchi, Utsunomiya, Tochigi 321-3292, Giappone	
Centro di Ricerca e sviluppo tecnologie ottiche	23-10, Kiyoharakogyodanchi, Utsunomiya, Tochigi 321-3298, Giappone	
Stabilimento di Toride	5-1, Hakusan 7-chome, Toride, Ibaraki 302-8501, Giappone	
Stabilimento di Ami	3577, Yoshiwara, Ohaza, Ami-machi, Inashiki-gun, Ibaraki 300-1195, Giappone	
Stabilimento di Oita	993-1, Nyu, Oita, Oita 870-0318, Giappone	
Canon Global Management Institute	2-14, Nakane 2-chome, Meguro-ku, Tokyo 152-0031, Giappone	
Centro di formazione alla produzione di Oita	1867-1, Tsunokobaru, Oita, Oita 870-0271, Giappone	

Nome azienda	Località	Fond.	Dip.
EUROPA			
Canon Bretagne S.A.S.	Francia/Liffré	1983	566
Canon Giessen GmbH	Germania/Giessen	1972	276
Canon Production Printing Netherlands B.V.	Paesi Bassi/Venlo	1954	1.751
Canon Production Printing Germany GmbH & Co. KG	Germania/Poing	1989	897
Axis Communications AB	Svezia/Lund	1984	2.270
ASIA			
Canon Dalian Business Machines, Inc.	RPC/Liaoning	1989	1.344
Canon Zhuhai, Inc.	RPC/Guangdong	1990	1.325
Canon Zhongshan Business Machines Co., Ltd.	RPC/Guangdong	2001	2.378
Canon (Suzhou) Inc.	RPC/Jiangsu	2001	3.823
Canon Finetech Nisca (Shenzhen) Inc.	RPC/Guangdong	1993	620
Canon Machinery (Dalian) Co., Ltd.	RPC/Liaoning	2003	80
Canon Inc., Taiwan	Taiwan	1970	3.936
Canon Electronic Business Machines (H.K.) Co., Ltd.	Hong Kong	1991	70
Canon Opto (Malaysia) Sdn. Bhd.	Malesia/Selangor	1988	1.622
Canon Electronics (Malaysia) Sdn. Bhd.	Malesia/Penang	1988	659
Canon Machinery (Malaysia) Sdn. Bhd.	Malesia/Selangor	1995	162
Canon Hi-Tech (Thailand) Ltd.	Thailandia/Ayutthaya	1990	8.136
Canon Prachinburi (Thailand) Ltd.	Thailandia/Prachinburi	2011	5.701
Canon Business Machines (Philippines), Inc.	Filippine/Batangas	2011	4.323
Canon Vietnam Co., Ltd.	Vietnam/Hanoi	2001	22.728
Canon Electronics Vietnam Co., Ltd.	Vietnam/Hung Yen	2008	2.407

* Consociate e affiliate valutate con il metodo del patrimonio netto *Numero di dipendenti al 31 dicembre 2020.

Consociate e affiliate di marketing

Nome azienda	Località	Fond.	Dip.
GIAPPONE			
Canon Marketing Japan Inc.	Tokyo	1968	4.908
Canon System & Support Inc.	Tokyo	1980	5.096
Canon Production Printing Systems Inc.	Tokyo	2014	452
Canon MEDTech Supply Corp.	Kanagawa	1956	247
Canon Electronics Business Systems Inc.	Saitama	1984	32
Ibaraki Marketing Systems Co., Ltd.	Ibaraki	2013	14
AMERICHE			
Canon U.S.A., Inc.	USA/New York	1965	1.593
Canon Solutions America, Inc.	USA/New York	2013	4.097
Canon Financial Services, Inc.	USA/New Jersey	1979	261
Canon Information & Imaging Solutions, Inc.	USA/New York	2011	86
Canon Business Process Services, Inc.	USA/New York	2013	3.073
Canon Canada, Inc.	Canada/Ontario	1972	873
Canon Mexicana, S. de R.L. de C.V.	Messico/Città del Messico	1978	247
Canon Panama, S.A.	Panama/Panama City	1968	126
Canon do Brasil Indústria e Comércio Ltda.	Brasile/San Paolo	1974	272
Canon Chile, S.A.	Cile/Santiago	1994	132
Axis Communications Inc.	USA/Massachusetts	1988	439
Canon Medical Systems USA, Inc.	USA/California	1989	1.109
Canon Medical Components U.S.A., Inc.	USA/California	2019	13
EUROPA			
Canon Europe Ltd.	Regno Unito/Londra	2000	694
Canon Europa N.V.	Paesi Bassi/Amstelveen	1982	541
Canon (UK) Ltd.	Regno Unito/Londra	1976	1.408
Canon (Ireland) Business Equipment Ltd.	Irlanda/Dublino	1987	59
Canon France S.A.S.	Francia/Parigi	1975	1.100
Canon Deutschland GmbH	Germania/Krefeld	1973	1.400
Canon Italia S.p.A.	Italia/Milano	1972	424
Canon Nederland N.V.	Paesi Bassi/'s-Hertogenbosch	1994	925
Canon Belgium N.V./S.A.	Belgio/Diegem	1978	503
Canon Luxembourg S.A.	Lussemburgo	1979	44
Canon Austria GmbH	Austria/Vienna	1975	353
Canon CEE GmbH	Austria/Vienna	1994	81
Canon (Schweiz) AG	Svizzera/Wallisellen	1951	559
Canon Hungaria Kereskedelmi Kft.	Ungheria/Budapest	1994	128
Canon Polska Sp. z o. o.	Polonia/Varsavia	1994	227
Canon CZ spol s.r.o.	Repubblica Ceca/Praga	1994	236
Canon Slovakia s.r.o.	Slovacchia/Bratislava	2000	19
Canon Danmark A/S	Danimarca/Copenaghen	1999	223
Canon Norge AS	Norvegia/Oslo	1967	264
Canon Svenska AB	Svezia/Stoccolma	1970	268
Canon Oy	Finlandia/Helsinki	1941	311
Canon ADRIA d.o.o.	Slovenia/Lubiana	2006	11
Canon Bulgaria EOOD	Bulgaria/Sofia	2001	8
Canon Croatia d.o.o.	Croazia/Zagabria	2013	5
Canon Ukraine LLC	Ucraina/Kiev	2012	18
Canon Ru LLC	Russia/Mosca	2004	222
Canon España S.A.	Spagna/Madrid	1974	935
Canon Portugal S.A.	Portogallo/Lisbona	2007	120
Milestone Systems A/S	Danimarca/Copenaghen	1998	479
Canon Medical Systems Europe B.V.	Paesi Bassi/Zoetermeer	1981	262
MEDIO ORIENTE/AFRICA			
Canon Middle East FZ-LLC	EAU/Dubai	2001	196
Canon Emirates LLC	EAU/Dubai	2007	129
Canon Office Imaging Solutions (Doha) LLC	Qatar/Doha	2014	42

Nome azienda	Località	Fond.	Dip.
Canon Saudi Arabia LLC	Arabia Saudita/Riyadh	2018	77
Canon Kenya Ltd.	Kenya/Nairobi	2013	11
Canon South Africa (Pty) Ltd.	Sudafrica/Johannesburg	1999	168
Canon Eurasia A.S.	Turchia/Istanbul	2007	126
Canon Israel Imaging and Business Solutions Ltd.	Israele/Rehovot	2017	4
Canon Nigeria Imaging Solutions Ltd.	Nigeria/Lagos	2016	15
ASIA			
Canon (China) Co., Ltd.	RPC/Pechino	1997	1.432
Canon Singapore Pte. Ltd.	Singapore	1979	848
Canon Hongkong Co., Ltd.	Hong Kong	1979	503
Canon Marketing (Taiwan) Co., Ltd.	Taiwan	2001	156
Canon Marketing (Malaysia) Sdn. Bhd.	Malesia/Selangor	1986	533
Canon Marketing (Thailand) Co., Ltd.	Thailandia/Bangkok	1994	613
Canon Marketing (Philippines), Inc.	Filippine/Taguig City	1996	302
Canon India Pvt. Ltd.	India/Nuova Delhi	1996	1.012
Canon Marketing Vietnam Co., Ltd.	Vietnam/Ho Chi Minh	2012	51
Canon Korea Consumer Imaging Inc.	Repubblica di Corea/Seul	2005	74
Canon Semiconductor Engineering Korea Inc.	Repubblica di Corea/Seul	1993	433
Canon Optical Industrial Equipment (Shanghai) Inc.	RPC/Shanghai	2002	513
Canon Semiconductor Equipment Taiwan, Inc.	Taiwan	1997	296
Canon Medical Systems (China) Co., Ltd.	RPC/Pechino	2007	744
Canon Korea Business Solutions Inc.*	Repubblica di Corea/Seul	1985	1.203
OCEANIA			
Canon Australia Pty. Ltd.	Australia/Sydney	1978	489
Canon New Zealand Ltd.	Nuova Zelanda/Auckland	1989	414
Canon Business Services Australia Pty Ltd.	Australia/Sydney	1994	604

Altre aziende

Nome azienda	Località	Fond.	Dip.
GIAPPONE			
Canon Technical Information Services Inc.	Tokyo	2003	71
Canon Customer Support Inc.	Chiba	1996	872
Canon BizAttenda Inc.	Tokyo	1985	303
Canon ITS Medical Inc.	Tokyo	1972	180
Canon Business Support Inc.	Tokyo	1997	404
Canon Medical Finance Co., Ltd.	Tokyo	1970	41
SPACE ONE Co., Ltd.	Tokyo	2017	36
A&A Co., Ltd.	Tokyo	1984	65
AMERICHE			
Canon Information Technology Services, Inc.	USA/Virginia	1998	309
EUROPA			
I.R.I.S. Group SA	Belgio/Louvain-la-Neuve	1987	17
ASIA			
Canon Engineering Hong Kong Co., Ltd.	Hong Kong	1994	95
Canon MailCom Malaysia Sdn. Bhd.	Malesia/Selangor	1982	196
OCEANIA			
Canon Finance Australia Ltd.	Australia/Sydney	1988	13

* Consociate e affiliate valutate con il metodo del patrimonio netto. *Numero di dipendenti al 31 dicembre 2020.



CANON INC.

30-2, Shimomaruko 3-chome, Ohta-ku, Tokyo 146-8501, Giappone